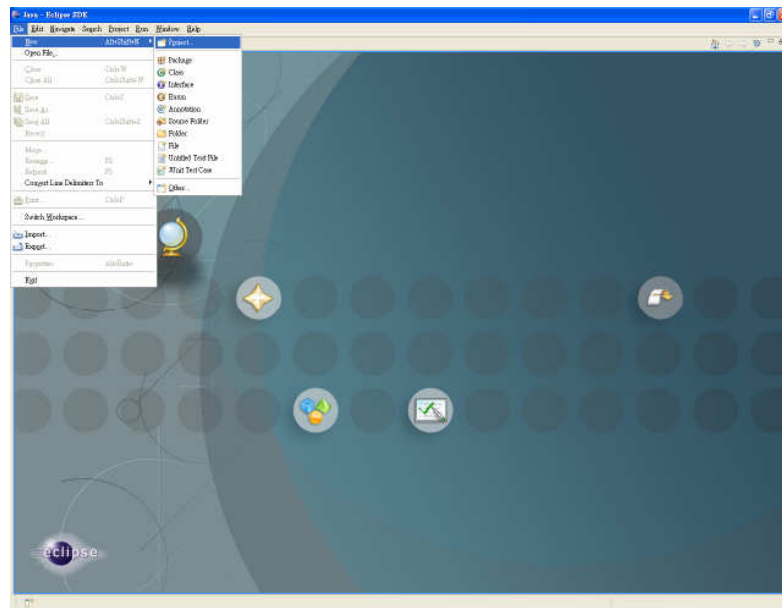
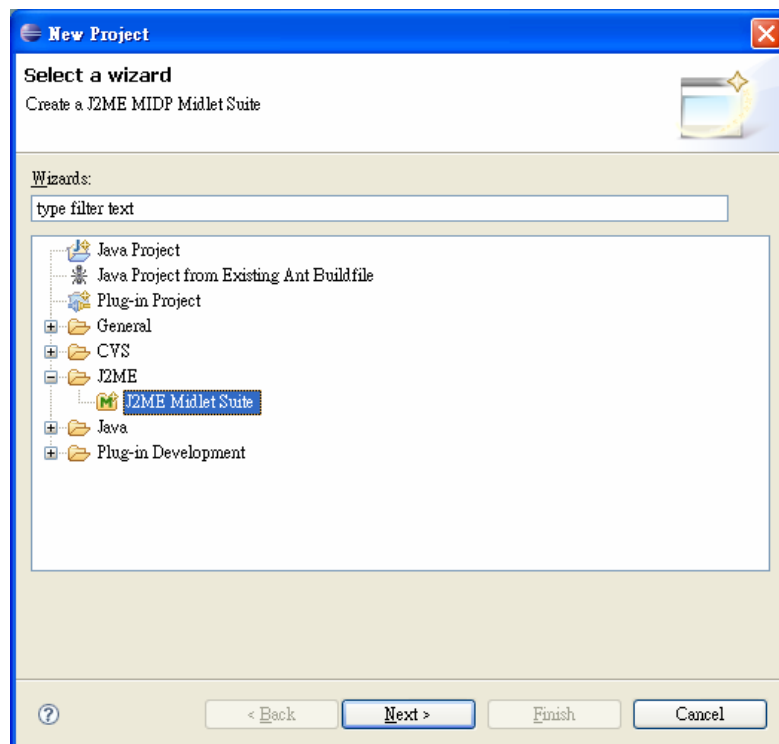


Step 1: Create a Project

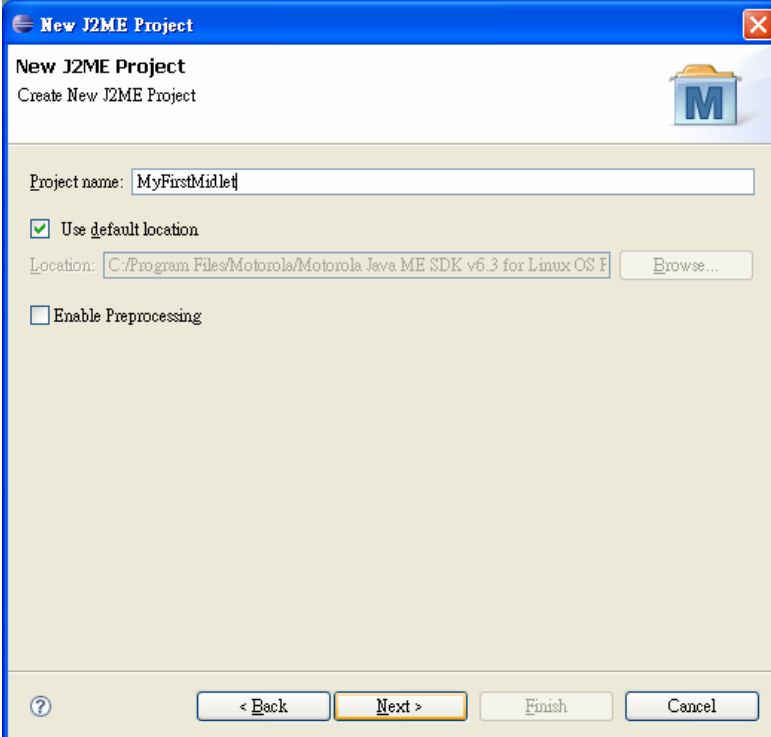
1.1 File -> New -> Project



1.2 J2ME -> J2ME Midlet Suite



1.3 Enter Project Name -> Next



The "New J2ME Project" dialog box is shown. It has a title bar with a blue background and a red close button. The main area is white with a blue border. The title "New J2ME Project" is at the top left, followed by the subtitle "Create New J2ME Project". A blue folder icon with a white "M" is on the right. Below the title, there is a text field for "Project name:" containing "MyFirstMidlet". A checkbox labeled "Use default location" is checked. Below it, a text field for "Location:" contains "C:/Program Files/Motorola/Motorola Java ME SDK v6.3 for Linux OS F", followed by a "Browse..." button. A checkbox labeled "Enable Preprocessing" is unchecked. At the bottom, there are four buttons: "< Back", "Next >", "Finish", and "Cancel". A question mark icon is on the left of the bottom row.

New J2ME Project
Create New J2ME Project

Project name: MyFirstMidlet

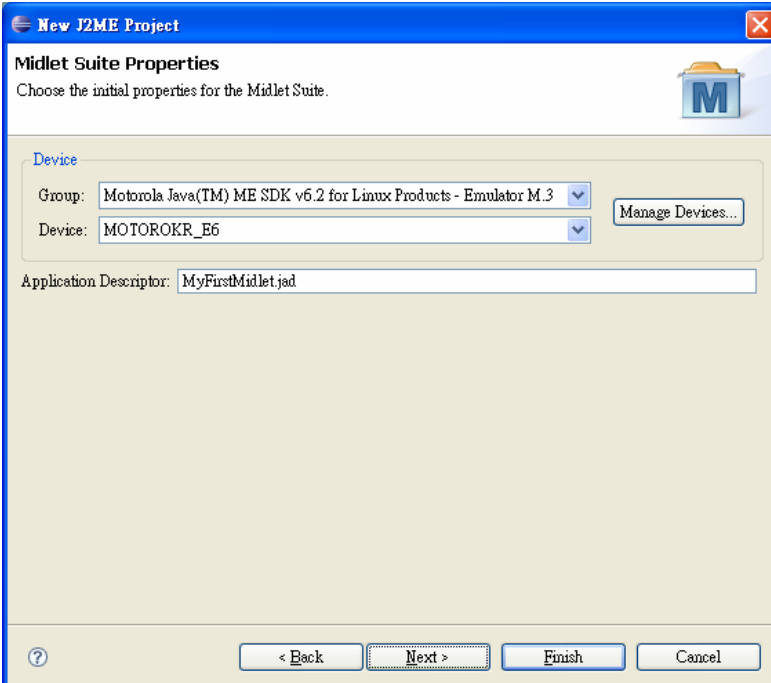
☒ Use default location

Location: C:/Program Files/Motorola/Motorola Java ME SDK v6.3 for Linux OS F Browse...

☐ Enable Preprocessing

< Back Next > Finish Cancel

1.4 Select Device MOTOROKR_E6 -> Finish



The "Midlet Suite Properties" dialog box is shown. It has a title bar with a blue background and a red close button. The main area is white with a blue border. The title "Midlet Suite Properties" is at the top left, followed by the subtitle "Choose the initial properties for the Midlet Suite." A blue folder icon with a white "M" is on the right. Below the title, there is a section labeled "Device" in blue. Inside this section, there are two dropdown menus: "Group:" with "Motorola Java(TM) ME SDK v6.2 for Linux Products - Emulator M.3" and "Device:" with "MOTOROKR_E6". A "Manage Devices..." button is to the right of the "Device:" dropdown. Below the "Device" section, there is a text field for "Application Descriptor:" containing "MyFirstMidlet.jad". At the bottom, there are four buttons: "< Back", "Next >", "Finish", and "Cancel". A question mark icon is on the left of the bottom row.

Midlet Suite Properties
Choose the initial properties for the Midlet Suite.

Device

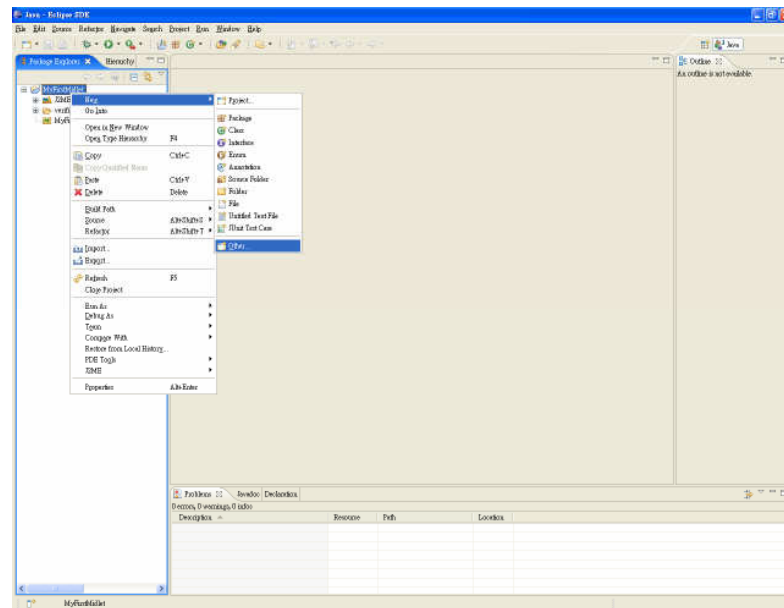
Group: Motorola Java(TM) ME SDK v6.2 for Linux Products - Emulator M.3 Manage Devices...

Device: MOTOROKR_E6

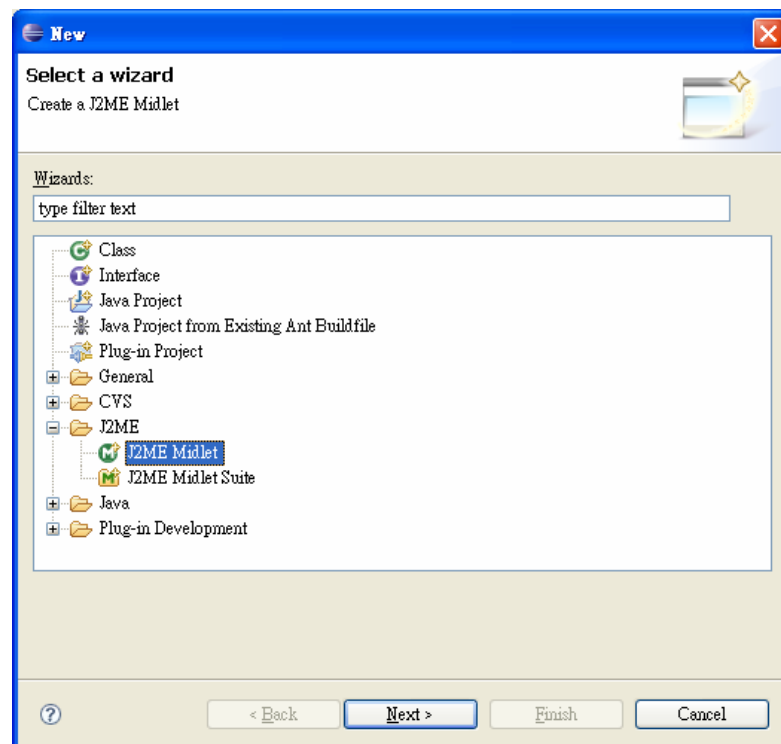
Application Descriptor: MyFirstMidlet.jad

< Back Next > Finish Cancel

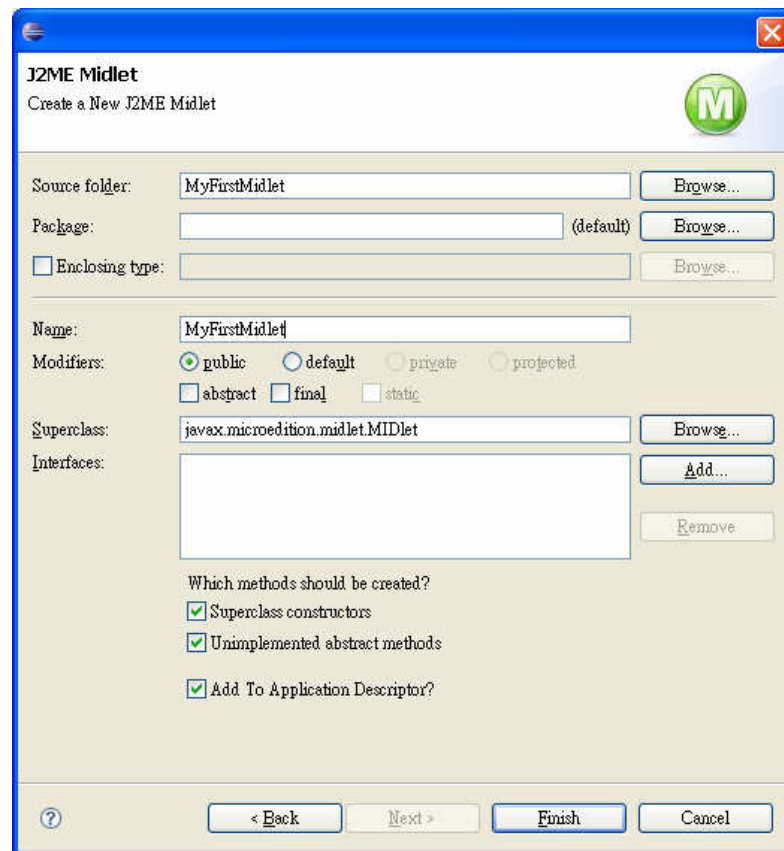
1.5 File -> New -> Other



1.6 J2Me Midlet -> Next

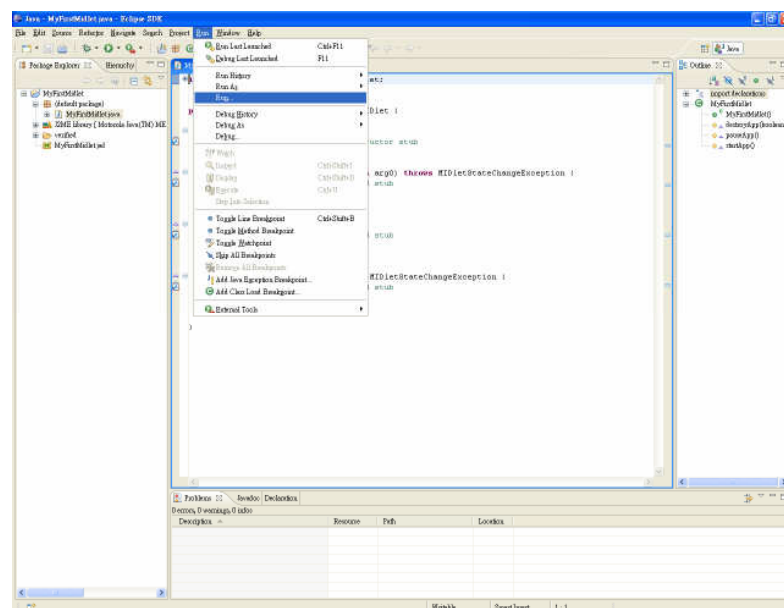


1.7 Enter Name for Midlet -> Finish (Package is optional)

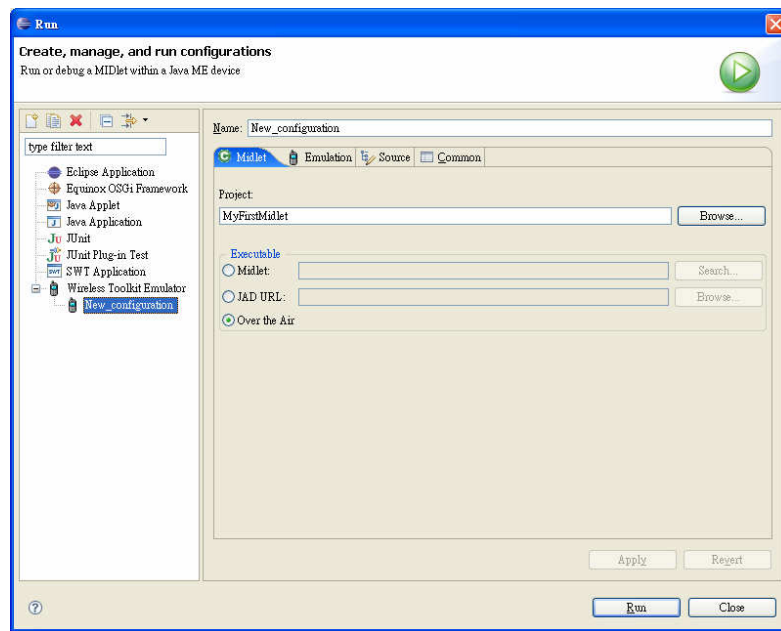


Step 2. execute

2.1 Run -> Run



2.2 double Click Wireless Toolkit Emulator -> Run



result

